

We test, You produce

G620

COMPACT LEAK TESTER WITH CONTINUOUS FLOW

Without a doubt the smallest high-performance continuous flow tester on the market. Specially adapted for automatic or semi-automatic test machines, the G620 has a full range of specifications at a very competitive price. The use of continuous testing may allow the localisation and repair of leaks.

Highlights

- COMPACT FORMAT
- EASY SET-UP
- OPTIONS & ACCESSORIES



Applications

Automotive, small volume parts, injection rails, filter caps, gaz industry, cookers, gas float, heat exchangers for boilers, taps...



G620

COMPACT LEAK TESTER WITH CONTINUOUS FLOW

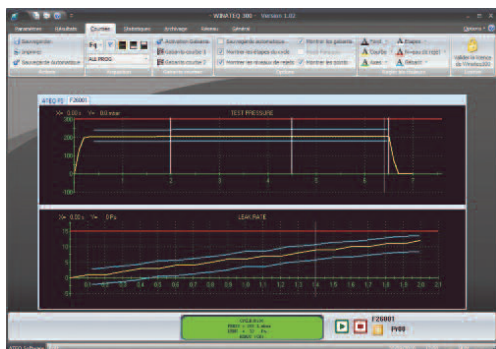
Main Features

- Continuous flow leak detection
- 128 programs
- 2 flow measurement ranges full scale : 100 or 1000 cm³.atm/h
- Measurement flow returned to standard conditions
- Manual calibration on front panel with calibrated leak
- Setting on line (via USB)
- Automatic start
- 2 languages (English + other one)
- Calculation of the test part volume
- Data storage on internal memory or USB key

Flexible Communication format

- RS232: Printer, modbus RTU
- Slave USB: PC supervision (WinAteq 300, sesame)
- Master USB: USB key to transfert (parameters, results, ...)
- Option Fieldbus: Profibus, devicenet, Ethernet/IP

Software



CDF60
leak/flow calibrator



Remote control



F620 leak tester



D620 Flow tester

Technical Specifications

Physical	Weight: 7 kg / 14 lbs Dimensions: (WxHxD) 250x150x360 mm
Interface	Navigation keys 4-line vacuum fluorescent display Results indicator lights
Electrical supply	Voltage: 24 V DC / 1.6 A or 100 - 240 V AC / 50 W
Air supply	Clean and dry air required air quality standard to be applied (ISO 8573-1)
Temperature	Operating: +10°C to +45°C Storage: 0°C to +60°C

Option

- 7 inputs / 5 outputs
- 1 quick connectors for calibration checking
- 2 pneumatic outputs for control of sealing connectors
- 6 x 24 V programmable outputs for external connection
- 2 voltage Analogue Output
- Special valve (Shut off and or Bypass)

Accessories

- Simple remote control TLC600 connection I/O
 - Advanced remote control TLC600 connection master USB
 - ATEQ software (WINATEQ)
 - Needle valve
 - Master leak
 - Filtration kit
 - Pneumatic coupler
- Please refer to ATEQ accessories list

